

Landlord's Guide to Recovery of Commercial Rent Arrears



Direct Bailiff Services Ltd



Churchill Recovery Solutions Ltd

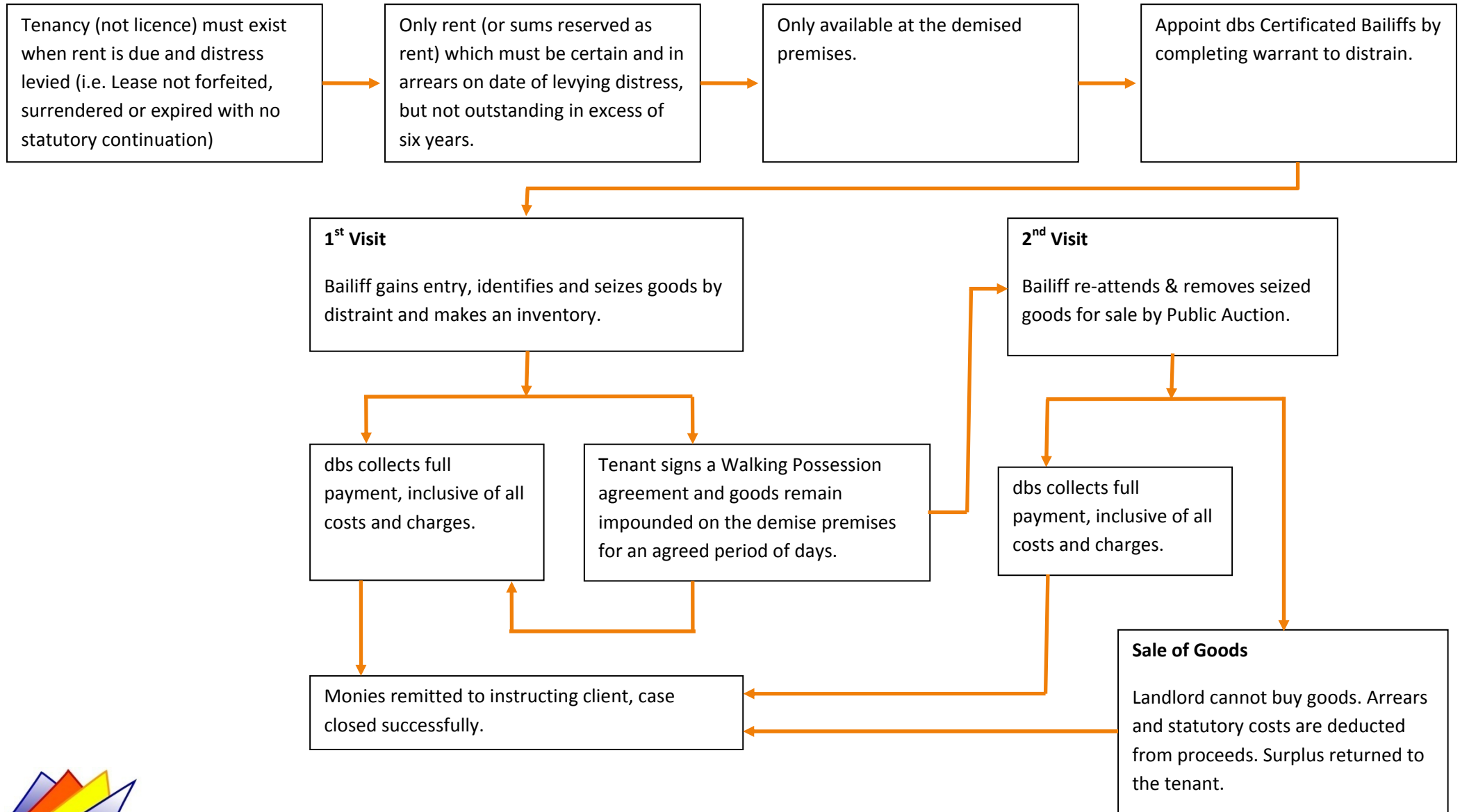
where experience counts

Contents Index

Below are links to the different sections of this document. In each topic you will find downloadable instruction forms.

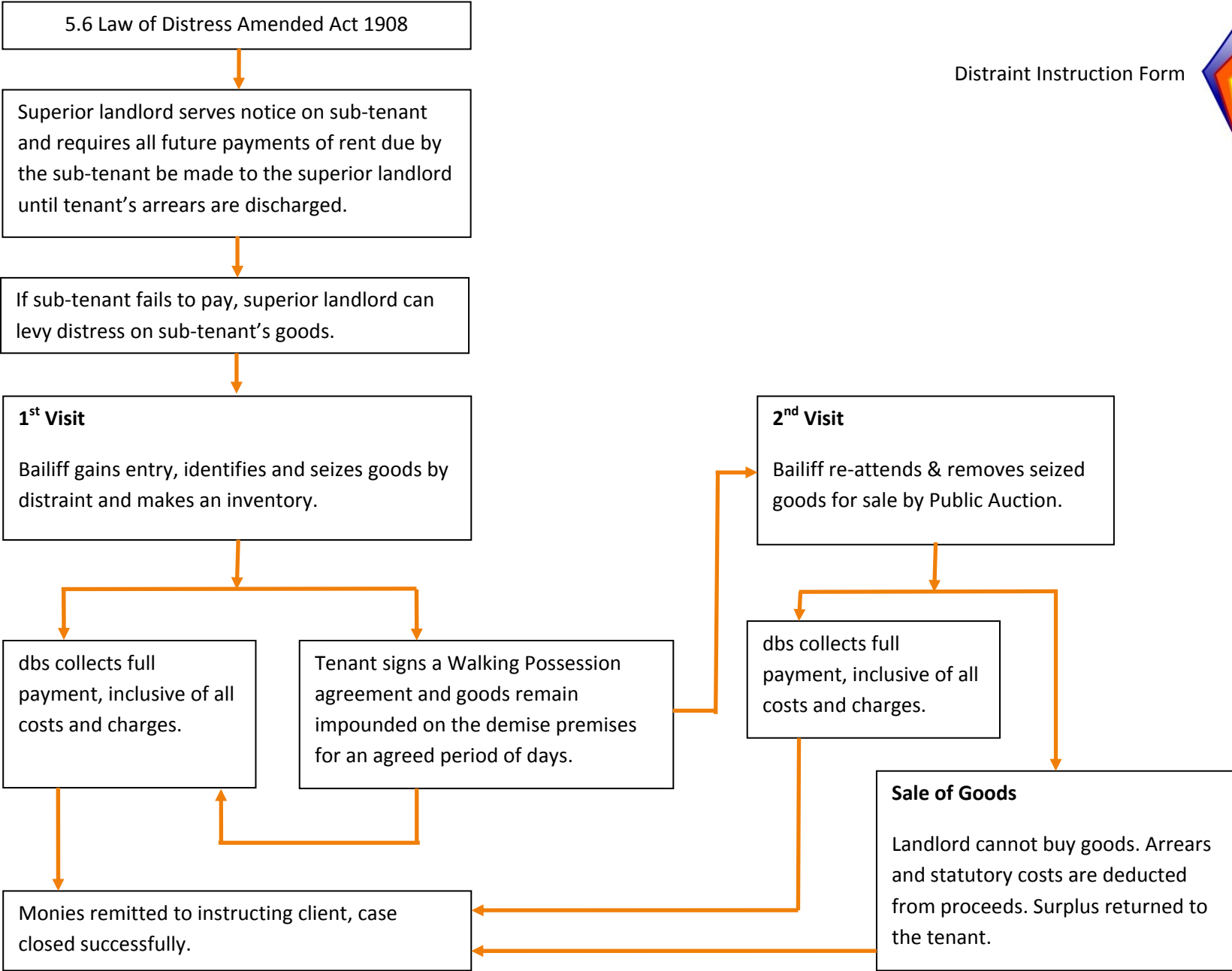
1. [Distrain](#)
2. [Demand Rent from Sub-Tenant](#)
3. [Forfeiture of Lease](#)
4. [Eviction](#)
5. [Trace / Debt Recovery](#)
6. [Litigation](#)
7. [Did you know...?](#)
8. [Contact Us](#)

Distraint



Distraint Instruction Form

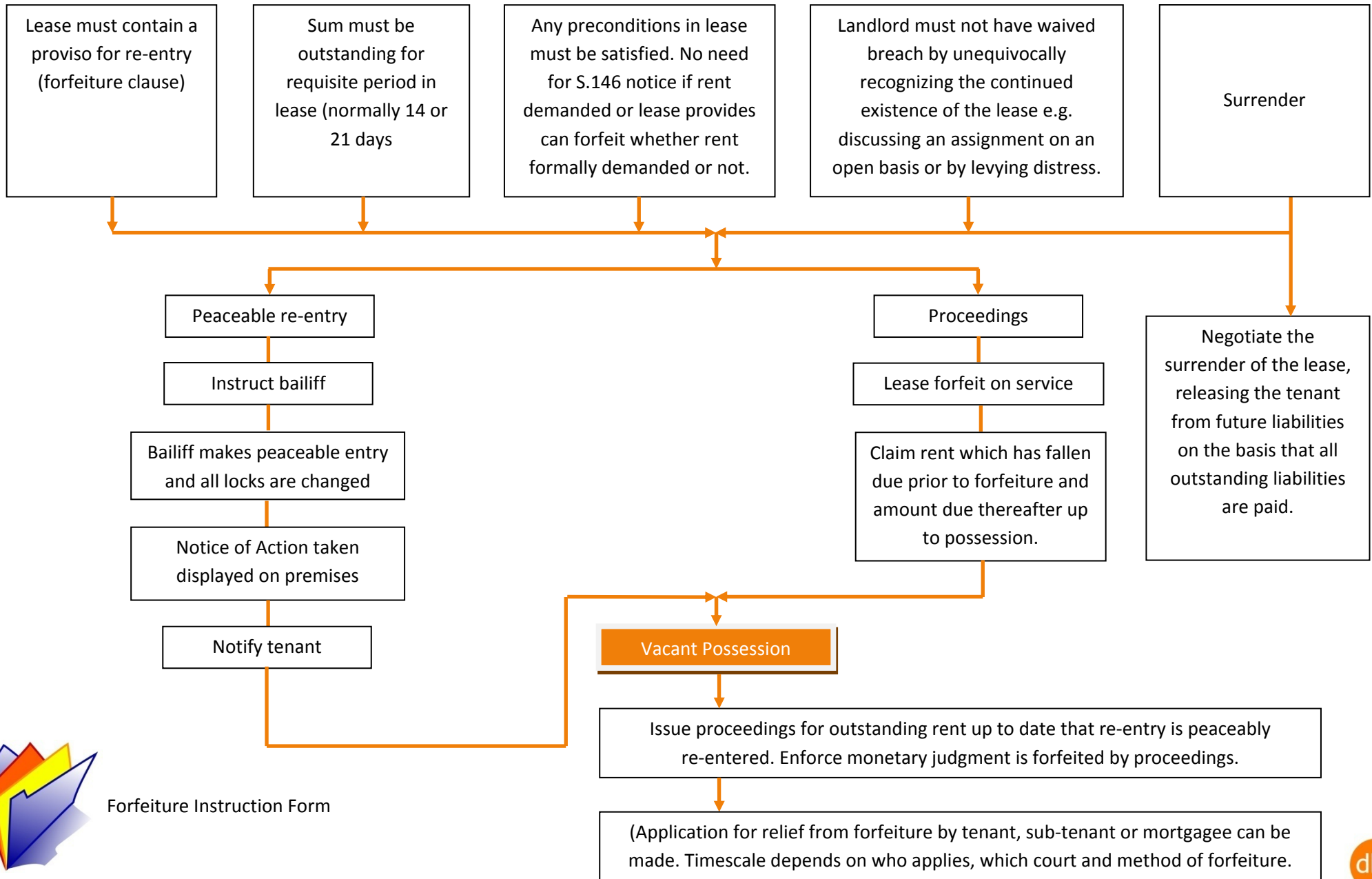
Demand Rent from Sub-Tenant



Distraint Instruction Form

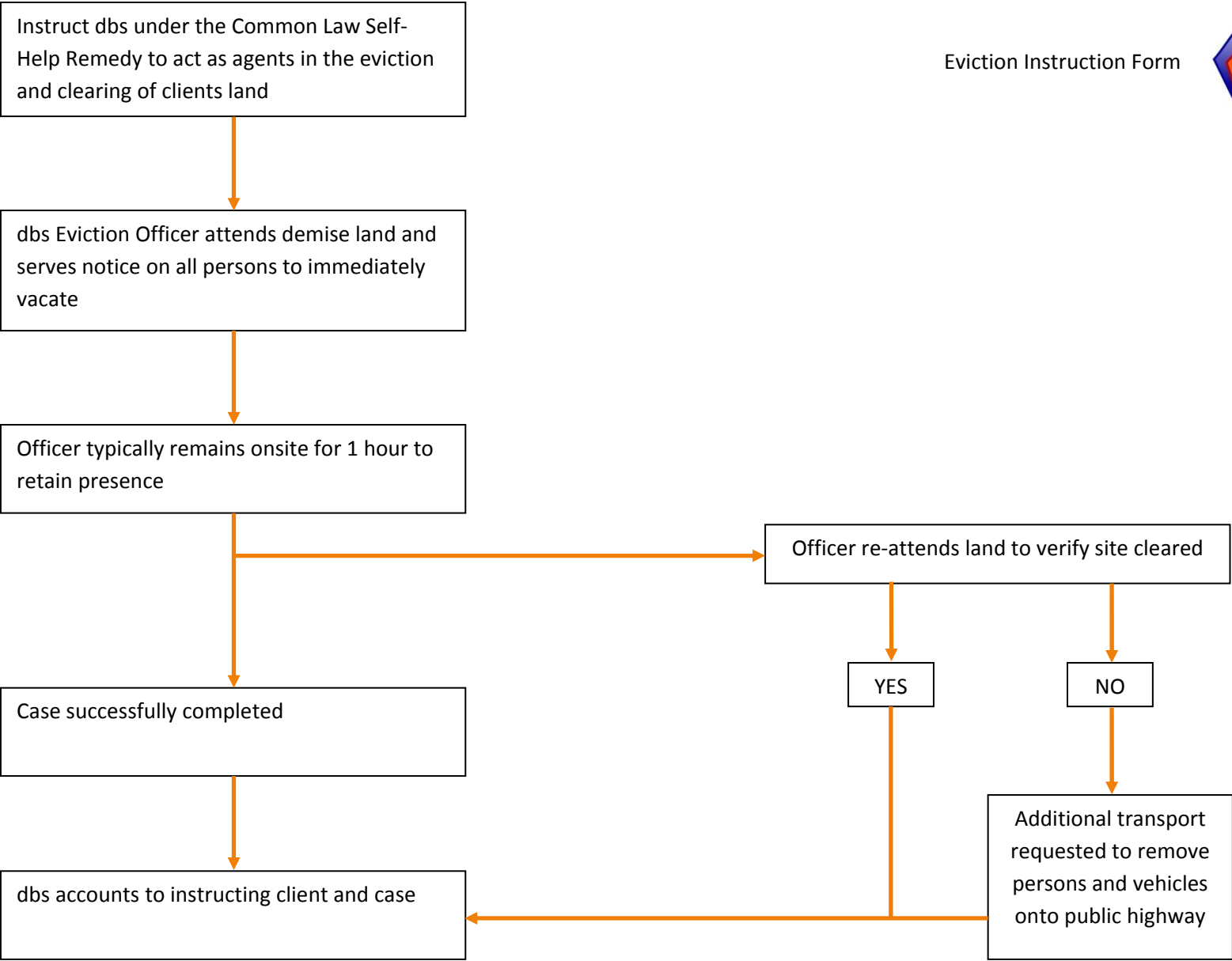


Forfeiture of Lease



Forfeiture Instruction Form

Eviction-Removal Of Travelers

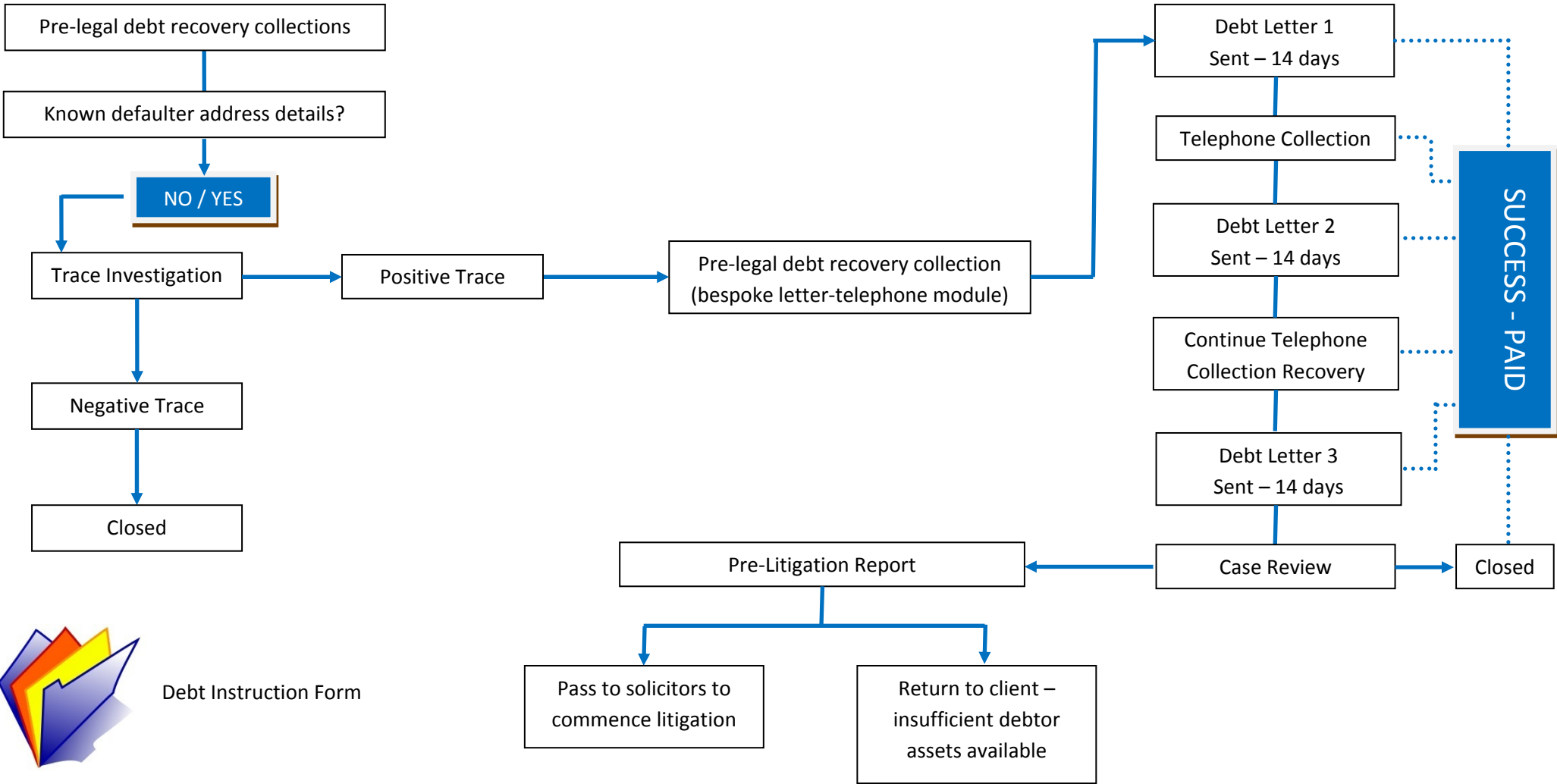


Eviction Instruction Form



where experience counts

Trace / Debt Recovery

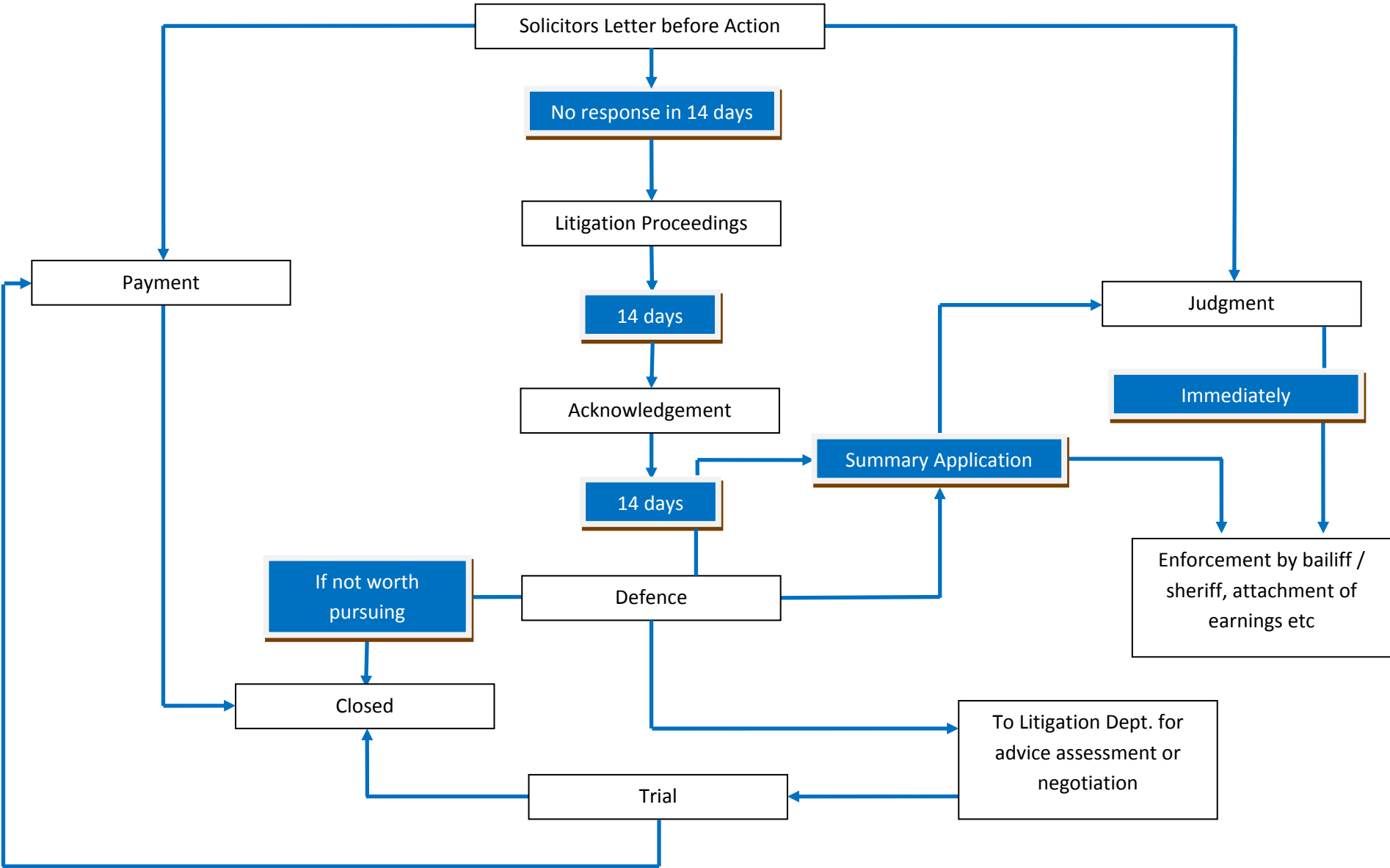


Debt Instruction Form



Trace Instruction Form

where experience counts



5 did you know about distress..?

- If a tenant gives notice to quit the premises at a particular time but does not, the tenant is liable for double rent for the period he stays in occupation.
- If a tenant clandestinely or fraudulently removes goods from the demise premises on which rent is in arrear with the intention of defeating distress, the landlord may seize the goods within 30 days.
- A bailiff can attend and distrain for rent arrears at a separate commercial property, providing the landlord is the same.
- A bailiff can peacefully force entry into a commercial property, without effecting forfeiture of lease; if the bailiff has been forcibly removed from the premises or the tenant is refusing access into the premises to enable distress to take place.
- A bailiff can commence a second distress for the same rent if there are exceptions to the general rule:
 - there are not sufficient goods on the property on the first occasion
 - on the first occasion the bailiff had reasonably mistaken the value of the goods seized; this is particularly appropriate where works of art and other objects of uncertain value are involved
 - the first distress was trespass and void

Protective Distraints

Protective Distraints are commonly used for impounding goods on the demise premises for a set period of time. Effectively crystallising the tenant and its assets and preventing any third party from commencing a recovery action against the businesses.



The distraint period is at your discretion and can often range from 14 days upwards. The action not only protects the landlord but also protects the tenant from any other potential enforcement proceedings.



The cost for a protective distraint is 80 pence per day + VAT and is a common tool used by commercial landlords against those tenants who are wanting a longer term payment-plan.

Pre-Bailiff Collections

dbS provides all its clients a pre-warrant rent collection service via its internal collection recovery team and its letter-and-telephone service.



Pre-Bailiff Collections is a bespoke service to meet the need and requirements of our individual clients. The service incorporates typically a two letter and telephone recovery cycle and is a proven recovery tool in securing payment-plans with tenants, who are unable to discharge the arrears in full.



The cost for dbS pre-bailiff collections is £35 plus Vat and recovered from the tenant as part of the process.

● Byron Crellin
Managing Director

m: 07825 087247
t: +44 (0) 1925 438 189
f: +44 (0) 1925 438 190
e: byron@dbsltd.net

● Michelle Crellin
Office Manager

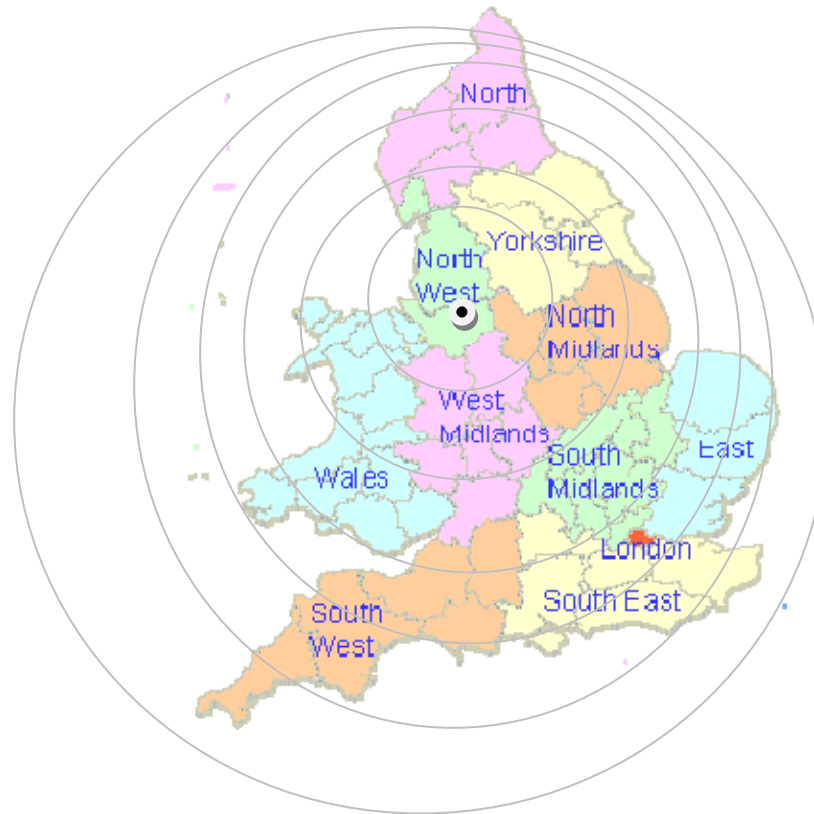
t: +44 (0) 1925 438 189
f: +44 (0) 1925 438 190
e: michelle@dbsltd.net

● Keith Hulse
IT Manager

m: 07817 591649
t: +44 (0) 1925 438 189
f: +44 (0) 1925 438 190
e: keith@dbsltd.net

● **New Business**

t: +44 (0) 1925 438 189
f: +44 (0) 1925 438 190
e: newbusiness@dbsltd.net



Suite 17, The White House
Wilderspool Business Park
Greenalls Avenue
Warrington
Cheshire
WA4 6HL
United Kingdom

t: +44 (0) 1925 438 189
f: +44 (0) 1925 438 190

A National Network
of locally based
experienced Enforcement Officers